

WGS 84 POSITIONS can be plotted directly on this chart

RIVER HUMBER Grimsby Middle

DEPTHS IN METRES
SCALE 1 : 12 500
SURVEYED BY
Harbour Master, Humber
ASSOCIATED BRITISH PORTS
2nd July 2020

Depths are in metres and decimetres reduced to the chart datum given below
Underlined figures are drying heights in metres and decimetres above chart datum
Overlined figures are above highest Astronomical Tide

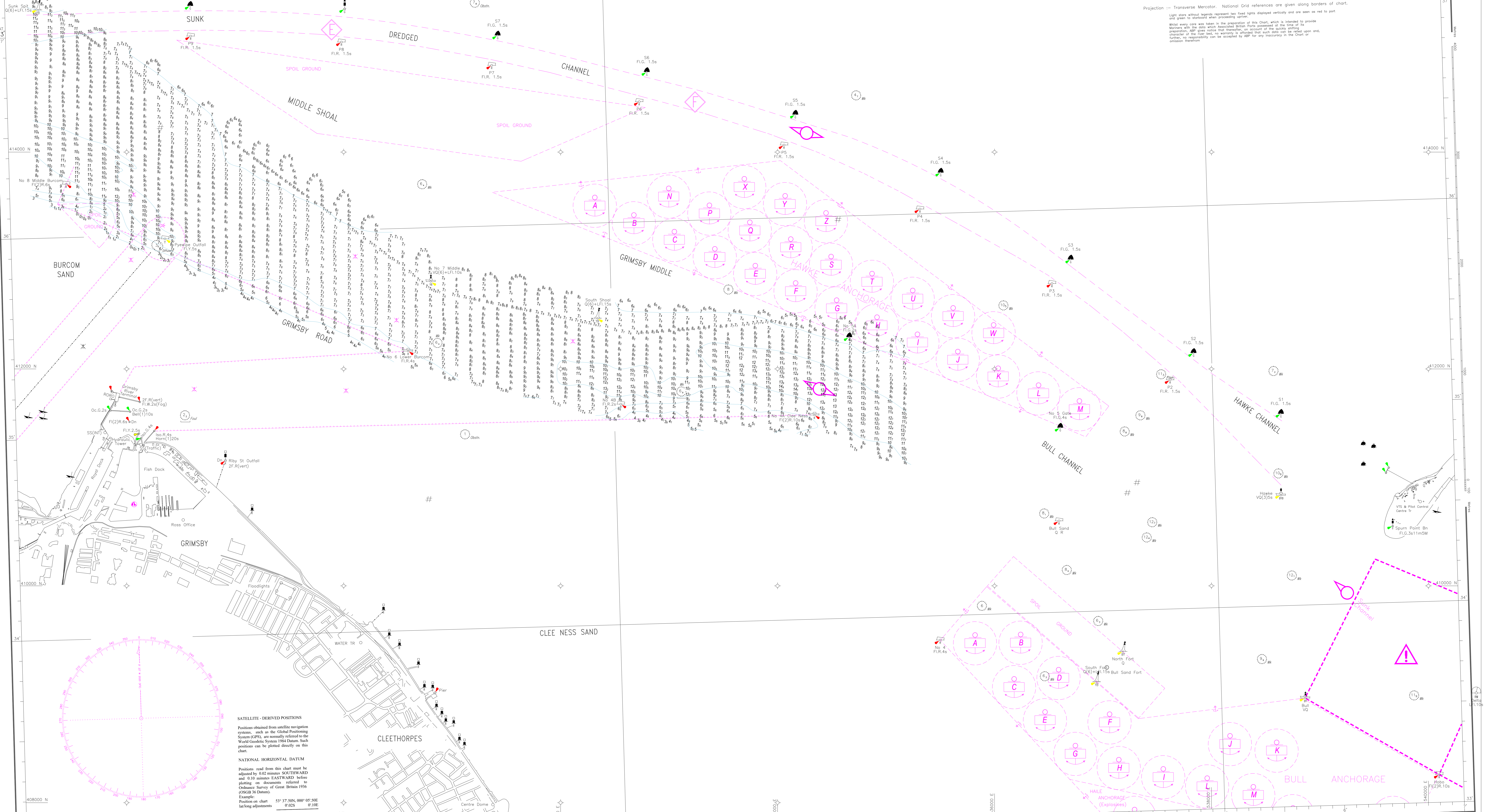
PLACE	Heights in metres above Chart Datum				Chart Datum and remarks
	M.H.W.S.	M.F.W.S.	M.L.W.S.	M.L.S.	
SPURN	6.9	5.5	2.7	1.2	3.9m below O.D. Newlyn ? Being approx. L.A.T.
GRIMSBY	7.1	5.7	2.6	1.1	3.9m - - - - -

Projection :- Transverse Mercator. National Grid references are given along borders of chart

Light stars without legends represent day lights displayed vertically and are seen so red to port and green to starboard when proceeding under way.

Hours	Geographical Position	Position	Position	Hours
UT	Lat. Long.	Lat. Long.	Lat. Long.	UT
0000	53° 37' 00" N 0° 02' 37" W	53° 37' 00" N 0° 02' 37" W	53° 37' 00" N 0° 02' 37" W	0000
0100	53° 36' 50" N 0° 02' 37" W	53° 36' 50" N 0° 02' 37" W	53° 36' 50" N 0° 02' 37" W	0100
0200	53° 36' 40" N 0° 02' 37" W	53° 36' 40" N 0° 02' 37" W	53° 36' 40" N 0° 02' 37" W	0200
0300	53° 36' 30" N 0° 02' 37" W	53° 36' 30" N 0° 02' 37" W	53° 36' 30" N 0° 02' 37" W	0300
0400	53° 36' 20" N 0° 02' 37" W	53° 36' 20" N 0° 02' 37" W	53° 36' 20" N 0° 02' 37" W	0400
0500	53° 36' 10" N 0° 02' 37" W	53° 36' 10" N 0° 02' 37" W	53° 36' 10" N 0° 02' 37" W	0500
0600	53° 36' 00" N 0° 02' 37" W	53° 36' 00" N 0° 02' 37" W	53° 36' 00" N 0° 02' 37" W	0600
0700	53° 35' 50" N 0° 02' 37" W	53° 35' 50" N 0° 02' 37" W	53° 35' 50" N 0° 02' 37" W	0700
0800	53° 35' 40" N 0° 02' 37" W	53° 35' 40" N 0° 02' 37" W	53° 35' 40" N 0° 02' 37" W	0800
0900	53° 35' 30" N 0° 02' 37" W	53° 35' 30" N 0° 02' 37" W	53° 35' 30" N 0° 02' 37" W	0900
1000	53° 35' 20" N 0° 02' 37" W	53° 35' 20" N 0° 02' 37" W	53° 35' 20" N 0° 02' 37" W	1000
1100	53° 35' 10" N 0° 02' 37" W	53° 35' 10" N 0° 02' 37" W	53° 35' 10" N 0° 02' 37" W	1100
1200	53° 35' 00" N 0° 02' 37" W	53° 35' 00" N 0° 02' 37" W	53° 35' 00" N 0° 02' 37" W	1200
1300	53° 34' 50" N 0° 02' 37" W	53° 34' 50" N 0° 02' 37" W	53° 34' 50" N 0° 02' 37" W	1300
1400	53° 34' 40" N 0° 02' 37" W	53° 34' 40" N 0° 02' 37" W	53° 34' 40" N 0° 02' 37" W	1400
1500	53° 34' 30" N 0° 02' 37" W	53° 34' 30" N 0° 02' 37" W	53° 34' 30" N 0° 02' 37" W	1500
1600	53° 34' 20" N 0° 02' 37" W	53° 34' 20" N 0° 02' 37" W	53° 34' 20" N 0° 02' 37" W	1600
1700	53° 34' 10" N 0° 02' 37" W	53° 34' 10" N 0° 02' 37" W	53° 34' 10" N 0° 02' 37" W	1700
1800	53° 34' 00" N 0° 02' 37" W	53° 34' 00" N 0° 02' 37" W	53° 34' 00" N 0° 02' 37" W	1800
1900	53° 33' 50" N 0° 02' 37" W	53° 33' 50" N 0° 02' 37" W	53° 33' 50" N 0° 02' 37" W	1900
2000	53° 33' 40" N 0° 02' 37" W	53° 33' 40" N 0° 02' 37" W	53° 33' 40" N 0° 02' 37" W	2000
2100	53° 33' 30" N 0° 02' 37" W	53° 33' 30" N 0° 02' 37" W	53° 33' 30" N 0° 02' 37" W	2100
2200	53° 33' 20" N 0° 02' 37" W	53° 33' 20" N 0° 02' 37" W	53° 33' 20" N 0° 02' 37" W	2200
2300	53° 33' 10" N 0° 02' 37" W	53° 33' 10" N 0° 02' 37" W	53° 33' 10" N 0° 02' 37" W	2300
2400	53° 33' 00" N 0° 02' 37" W	53° 33' 00" N 0° 02' 37" W	53° 33' 00" N 0° 02' 37" W	2400

Measured Mile
Course 112° - 292°



SATELLITE-DERIVED POSITIONS
Positions obtained from satellite navigation systems, such as the Global Positioning System (GPS), are normally referred to the World Geodetic System 1984 Datum. Such positions can be plotted directly on this chart.

NATIONAL HORIZONTAL DATUM
Positions read from this chart must be adjusted by 0.02 metres SOUTHWARD and 0.10 metres EASTWARD before plotting on documents referred to Ordnance Survey of Great Britain 1936 (OSGB 36 Datum).
Example:
Position on chart 53° 37' 50.000 0° 05' 40.000
lat/long adjustments 0.02S 0.10E
OSGB 36 position 53° 37' 48.000 0° 05' 40.000

WGS 84 POSITIONS can be plotted directly on this chart